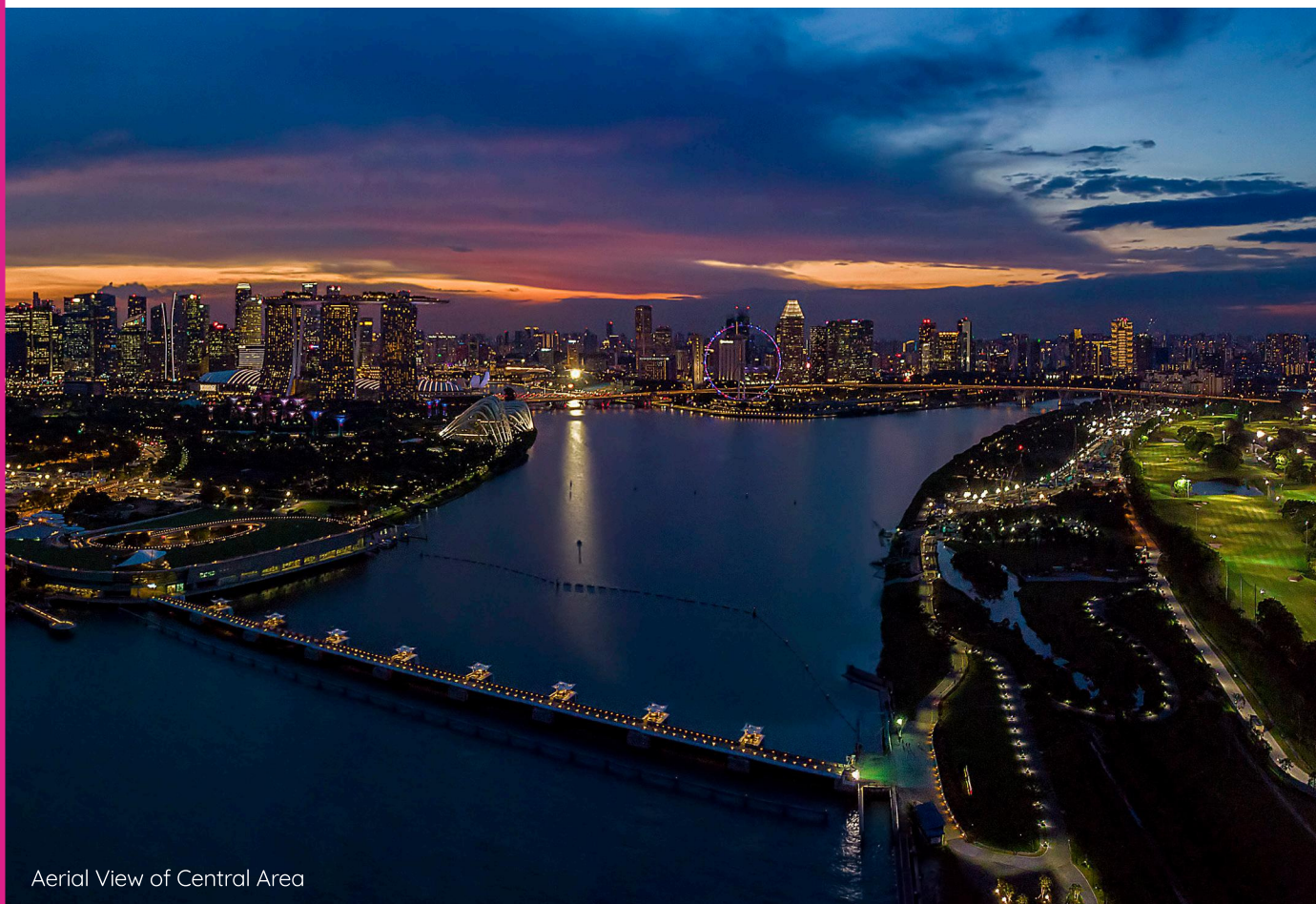


# DRAFT MASTER PLAN 2019

## WHAT TO LOOK OUT FOR IN CENTRAL AREA!

The Central Area stands as Singapore's dynamic city centre – home to a global business and financial hub, and a vibrant 24/7 lifestyle destination. The area will continue to grow and become even more vibrant, by accommodating a wider diversity of uses and offering more jobs and business opportunities for the future economy. More city living options nearer to amenities are planned too, with delightful streets and public spaces that celebrate its rich cultural, heritage and green assets. For more information on the Draft Master Plan 2019, please visit [ura.sg/DMP19](http://ura.sg/DMP19).



Aerial View of Central Area

## LIFESTYLE DESTINATION AT ORCHARD ROAD

New retail concepts, as well as more attractions and events will move Orchard Road from a shopping paradise to a true lifestyle destination. This will be made possible with an expanded park with family-friendly attractions at Dhoby Ghaut MRT interchange, as well as enhanced greenery linking Singapore Botanic Gardens and Fort Canning Park.

## EXPANDED ARTS & CULTURAL PRECINCT

With new park spaces at Canning Rise and Armenian Street, streetscape improvements and public spaces connecting the arts and cultural offerings at Civic District, Bras Basah, Bugis and Fort Canning Park, visitors can look forward to a leisurely, multi-experiential stroll around a vibrant, walkable arts & cultural precinct.

## CELEBRATING OUR HERITAGE PRECINCTS

The treasured historic districts of Little India, Kampong Glam and Chinatown with their rich heritage will become more vibrant, through continued place-making efforts in collaboration with the local community and businesses.

## URBAN LIVING AT MARINA SOUTH

New housing will be built in Marina South, next to Bay South Gardens, in tandem with community facilities and precinct amenities to create a car-lite urban village that is conducive for walking and cycling.

## 24/7 DOWNTOWN

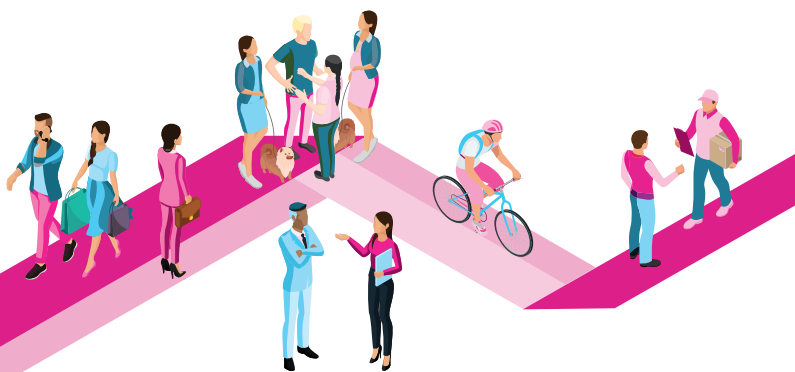
Downtown will continue to grow by accommodating a wider diversity of uses, including more residential and creative lifestyle possibilities. Better connectivity, and an enhanced public realm will also help to anchor its position as a dynamic 24/7 downtown and global financial hub.

## DEVELOPMENTS AROUND THOMSON - EAST COAST LINE (TEL) AND CIRCLE LINE (CCL)

Connectivity in the city centre will be greatly enhanced with the upcoming TEL and CCL MRT stations in the Central Area by 2021 and 2025. Planned integrated developments at the Orchard and Outram MRT interchanges will provide attractive city living options, with new homes and other mix of uses.

## CITY CENTRE CYCLING NETWORK

Active, convenient commuting within the city centre will be enhanced with 5km of the planned cycling network completed by 2021.



LEGEND			
	EXISTING DEVELOPMENTS		NEW DEVELOPMENTS
	Park/ Open Space		Residential
	Interim Park		Integrated Development
	MRT		Hawker Centre
	Waterbody		Sports & Recreation
	Park Connector/ Cycling Route		Road Improvement (Upcoming/ Under Study)
	MRT		Interim Park
	Park Connector/ Cycling Route		